

## HVAC COIL CABINET

CAPACITY: 0.83 to 300.0 Tons And More

10,000 to 3,600,000 BtuH

2.9 to 1,055.06 KW



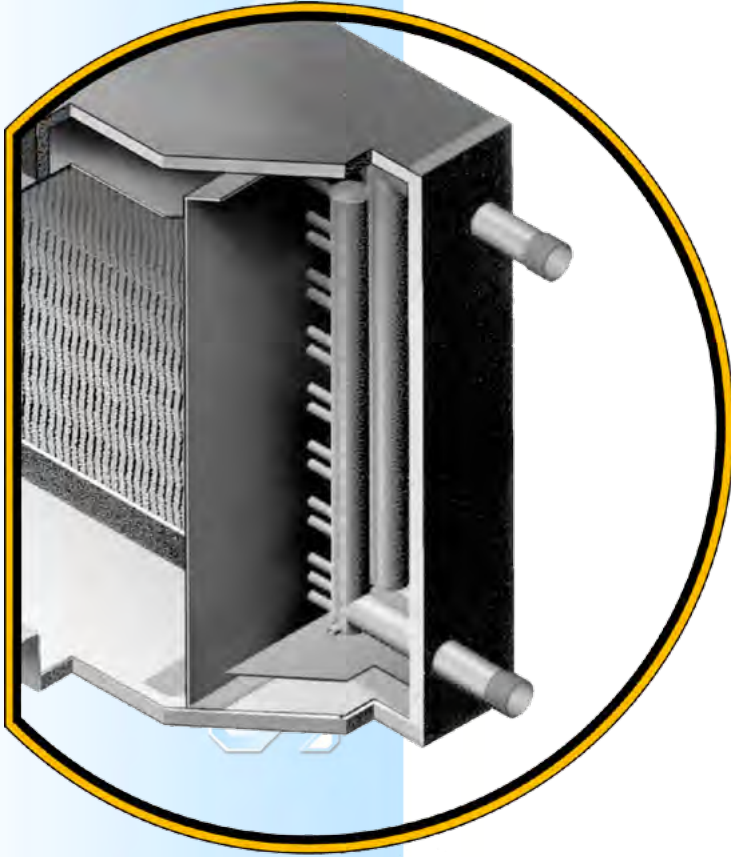
### Features/Benefits

Cooling coils may have an insulated or non insulated cabinet. For insulated cabinet model, the exterior of the assembly does not allow condensation to form. There are a lot of definitions such as (coil cabinet, coil box, coil housing, coil casing). Seacon prefers the terms coil cabinet or casing. (The metal frame that holds the finned pack together is often referred to as the casing.)

Seacon offers a line of low pressure, horizontal airflow cabinets that will satisfy many light commercial applications and feature considerable dimensional flexibility. They can be designed for either indoor or outdoor use and the coil is easily removable from either side.

There are a wide variety of casing other options, including:

- Powder Coated Painted
- Weather Proofing Coated
- Aluminum
- Stainless Steel



## Standard Box Construction

- 16-gage galvanized sheetmetal housing (unpainted)
- 1 " / 1 1/2 lbs. sq. ft. insulation open face (not exposed to the air stream)
- Panel access to the headers and return bends
- 16-gage galvanized drain pan with mastic coating (stainless steel drain pan is available as an option)
- 1" FPT drain coupling in drain pan
- Offset fin pack to maximize performance and drainage
- 1 1/2" duct flanges on entering and leaving airside of coil housing
- 6" connection stub outs on all coil models
- Sloped drain pan

Standard Type							
Row	1	2	3	4	6	8	10
CD with Drain Pan	15"	15"	18"	18"	20"	24"	28"
CD without Drain Pan	8"	8"	8"	10"	12"	16"	18"

### Standard Box Sizes Available

- Finned height = 12" to 48" in 1 1/2" increments
- Finned length = 12" to 128" in 1/2" increments

### Recommendations: Face Velocities and Static Pressure

- Maximum of 500 FPM - up to 48" FH x 120" FL with 8 FPI or less
- Maximum of 450 FPM - up to 48" FH x 120" FL with 9 FPI or greater

The standard coil box design will accept either a blowthrough or draw-through application. The maximum static pressure acceptable would be 2" w.g. positive or -1 " w.g. negative (measured on inlet side of coil). Localized areas of higher velocities can cause water carry-over and must be avoided.

### Options:

- FH up to 72"
- FL up to 180"
- Intermediate Drain Pan
- S.S. Drain Pan
- Multiple Coils
- Welded Steel Bases
- Painted Boxes
- Double Wall Construction
- Mounted Filter Rack
- Mounted TXVs
- Mounted Hot Gas By-Pass Connection

FRESH AIR PRE COOLING COIL CABINET  
CAPACITY: 3.30 to 125.0 Tons And More  
39,600 to 1,500,000 BtuH  
11.6 to 439.60 KW



### Features/Benefits

SEACON fresh air pre cooling coil cabinet is a advance design which enable you to bring the outdoor air down to required temperature. By doing this, You are able to control the fresh air temperature before entering any air handling unit or service location.

Type of cabinet with difference combination:

- Fresh Air Pre Cooling Coil Cabinet Unit
- Self Contain Fresh Air Pre Cooling Coil Cabinet Unit
- Fresh Air Pre Cooling Coil Cabinet Unit with blower Fan

### Fresh Air Pre Cooling Coil Cabinet Unit

This unit are connected to any existing or New air handling unit which the fresh air temperature entering the air handling are higher than the design required temperature. By having this unit connected to our pre-selected condensing unit, the temperature of fresh air is reduce before mixing with the return air.

### Fresh Air Pre Cooling Coil Cabinet Unit with blower Fan

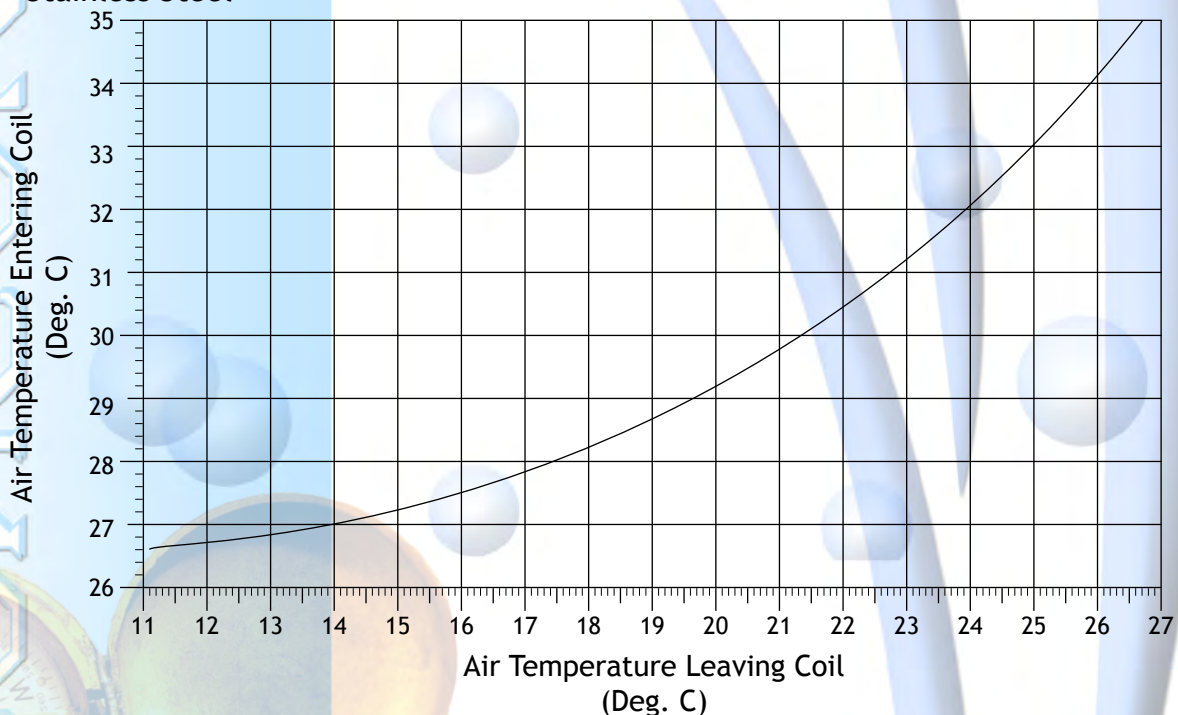
This unit are connected to any existing or New air handling unit which the fresh air temperature entering the air handling are higher than the design required temperature and located at a distance longer then the return air which fresh air flow are not adequate. This addition blower is added as a booster fan to allow the fresh air are properly supply to the air handling unit. By having this unit connected to our pre-selected condensing unit, the temperature of fresh air are reduce and boosted air flow before mixing with the return air.

### Self-Contain Fresh Air Pre Cooling Coil Cabinet Unit

This unit are connected to any existing or New air handling unit which the fresh air temperature entering the air handling are higher than the design required temperature. This unit is self-contain which include the condensing unit with the pre cooling coil cabinet. It can be mounted to any fresh air inlet which has adequate air flow. A booster fan can be added to this unit as a full package unit, but do note that the unit size will be very large.

There is a wide variety of casing other options, including:

- Powder Coated Painted
- Weather Proofing Coated
- Aluminum
- Stainless Steel



Modular Type, Single Skin, Double Skin of 1" Panel,  
 A Multiple Choice of Insulation Material. " Direct Expansion Fresh air Pre Cooled Unit "

**Model Range: 3.3 ~18.8 Tons.**

MODEL: DS-DX-AHU-H		001	002	003	004	005	006	007
Norminal Capacity	Btu/h	39,000	54,000	75,000	112,500	150,000	187,500	225,000
Norminal Tonnage	Tons	3.3	4.5	6.3	9.4	12.5	15.6	18.8
Norminal Kilowatt-Hour	KWH	11.4	15.8	22.0	33.0	44.0	54.9	65.9
Air Flow	CFM	1,300	1,800	2,500	3,750	5,000	6,250	7,500
	CMH	2,209	3,058	4,248	6,371	8,495	10,619	12,743
Static Pressure	in. wg	1.232	1.761	1.86	1.86	2.11	2.11	2.11
Standard Width (mm)	Width (mm)	800	900	1150	1450	1800	1700	1700
Standard Height (mm)	Height (mm)	800	850	900	1050	1050	1150	1500
Coil Section								
4-6 Row Section Length	(mm)	500	500	500	500	500	500	500
Tube	Inch	3/8"	3/8"	3/8"	3/8"	3/8"	3/8"	3/8"
Filter Box Panel (Optional)								
Short Length	mm	700	700	700	700	700	700	700
Filter								
Hepa Filter 12"x24"x12"		-	-	1	-	1	2	-
Hepa Filter 24"x24"x12"		1	1	1	2	2	2	4

**Model Range: 21.9 ~56.25 Tons.**

MODEL: DS-AHU-H		008	009	010	011	012	013	014
Norminal Capacity	Btu/h	262,500	315,000	375,000	450,000	525,000	600,000	675,000
Norminal Tonnage	Tons	21.9	26.3	31.3	37.5	43.8	50.0	56.25
Norminal Kilowatt-Hour	KWH	76.9	92.3	110.0	131.9	153.8	175.8	219.8
Air Flow	CFM	8,750	10,500	12,500	15,000	17,500	20,000	22,500
	CMH	14,866	17,840	21,238	25,485	29,733	33,980	38,250
Static Pressure	in. wg	2.36	2.36	2.36	2.61	2.86	2.86	2.86
Standard Width (mm)	Width (mm)	1800	2100	2400	2400	2700	2700	2700
Standard Height (mm)	Height (mm)	1500	1500	1500	1800	1800	1900	2100
Coil Section								
4-6 Row Section Length	(mm)	500	500	500	500	500	500	500
Tube	Inch	3/8"	1/2"	1/2"	1/2"	1/2"	1/2"	1/2"
Filter Box Panel (Optional)								
Short Length	mm	700	700	700	700	700	700	700
Filter								
Hepa Filter 12"x24"x12"		2	-	2	3	4	4	-
Hepa Filter 24"x24"x12"		4	6	6	6	8	8	12

**Model Range: 62.5 ~125.0 Tons.**

MODEL: DS-AHU-H		015	016	017	018	019	020
Norminal Capacity	Btu/h	750,000	900,000	990,000	1,125,000	1,300,000	1,500,000
Norminal Tonnage	Tons	62.5	75.0	82.5	93.8	108.3	125.0
Norminal Kilowatt-Hour	KWH	263.7	290.1	329.6	380.9	439.5	-
Air Flow	CFM	25,000	30,000	33,000	37,500	43,500	50,000
	CMH	42,475	50,970	56,067	63,713	73,907	84,951
Static Pressure	in. wg	2.86	3.36	3.36	3.86	3.86	3.86
Standard Width (mm)	Width (mm)	3050	3400	3650	3650	3650	3950
Standard Height (mm)	Height (mm)	2100	2200	2350	2700	3050	3050
Coil Section							
4-6 Row Section Length	(mm)	500	500	500	500	500	500
Tube	Inch	1/2"	1/2"	1/2"	1/2"	1/2"	1/2"
Filter Box Panel (Optional)							
Short Length	mm	700	700	700	700	700	700
Filter							
Hepa Filter 12"x24"x12"		3	-	3	-	5	6
Hepa Filter 24"x24"x12"		12	15	15	20	20	24

Capacity base on  
 Entering air at 33 °C Dry Bulb  
 Leaving air, refer to graph for a estimated temperature.