

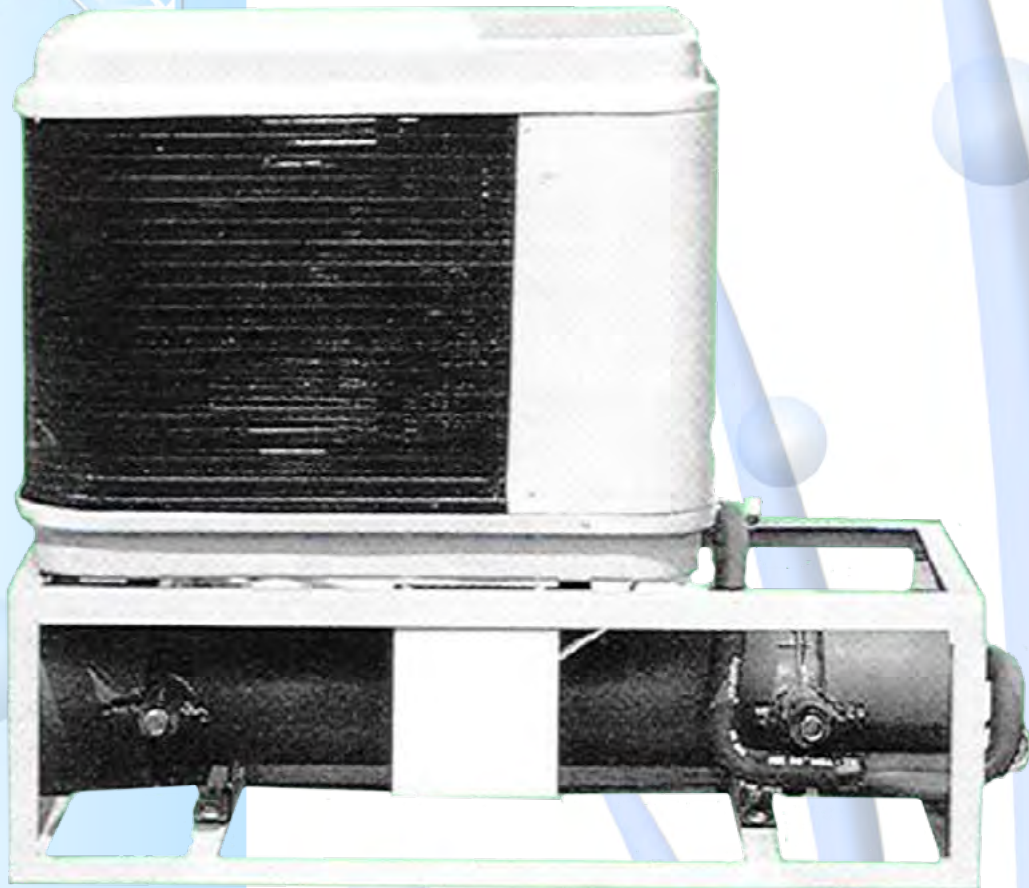
PACKAGE AIR COOLED CHILLER UNIT

MODEL: PNSA-CWB-H

CAPACITY: 1.89 to 4.5 Nominal Tons

22,680 to 54,400 Btuh

6.7 to 15.9 KW



Features/Benefits

The PNSA-CWB unit has a compact design that is up to 50% smaller than earlier air-cooled chillers. The compact footprint can yield substantial installation savings by requiring less structural steel, concrete, security fencing or architectural screening. The PNSA-CWB unit is delivered as a complete package for easy installation. A quick start-up is assured once installation is complete, since each PNSA-CWB unit is manufactured at an ISO 9002 listed manufacturing facility to ensure quality. In addition, all units are factory run tested under full load to provide reliable start-up.

PHYSICAL DATA & ELECTRICAL DATA

MODEL: PNSA-CWB-H		025	030	036	050	060	
Nominal Cooling Capacity	BTUH	22,680	26,770	32,900	45,500	54,400	
	Tons	1.89	2.23	2.74	3.79	4.53	
	KW	6.7	7.8	9.6	13.3	15.9	
Compressor	Type	ROTARY	SCROLL	SCROLL	SCROLL	SCROLL	
	HP.	2-1/2	2-1/2	3	4-1/2	6	
	Qty./Unit	1					
Condenser Coil	Type/Material	Aluminium Louver Slit Fin With Innergroove Copper Tube					
	Face area (Sq. Ft.)	6.72	8.96	8.96	10.75	10.75	
	Rows..Fins/In	1.73/12	1.0/12	1.6/12	1.67/12	2.0/12	
	Tube Size (in)	3/8"					
Compressor Fan	FAN	TYPE	Propeller Fan : Vertical Discharge : Direct Drive				
		Diameter (in)	18"				
		Diameter (mm)	457				
	MOTOR	Each Motor (HP.)	1/12	1/6	1/6	1/3	1/3
		Rpm.	780	900	900	1200	1200
		Qty./Unit	1				
Refrigerant	Type	R-22 (R-407C On Request Only)					
	Charge	Holding					
WATER CHILLER							
No. of Circuits		1					
Chilled Water Flowrate	GPM	4.54	5.358	6.46	9.1	10.88	
Chilled Water Temp. In/Out	° F	55 / 45					
	° C	13 / 7					
Chilled Water Pressure Drop	Ft. WG	1.52	1.02	1.34	2.26	3.32	
Water Connection In / Out	inch	3/4	3/4	3/4	1	1	
	mm	19	19	19	25	25	
Compressor (Each)	V / PH / Hz	220/1/50			380/3/50		
	V / PH / Hz	208/1/60	208/1/60	220/1/50	440/3/60	220/3/60	440/3/60
	RLA.	14.3	16.4	17.1	7.1	8.9	10
	LRA.	55	82	97	46	65.5	74
Fan Motor (Each)	V / PH / Hz	220V / 1P / 50Hz					
	V / PH / Hz	208V / 1P / 60Hz					
	RLA.	0.5	0.89	0.89	1.82	1.82	
Weight	Operation (Kgs)	148	160	165	210	216	

Note :

RLA = Rated Load Amp.

LRA = Locked Rotor Amp.

* Nominal Cooling Capacity Based on 3°C Suction Temp. and 35 °C Ambient Temp.

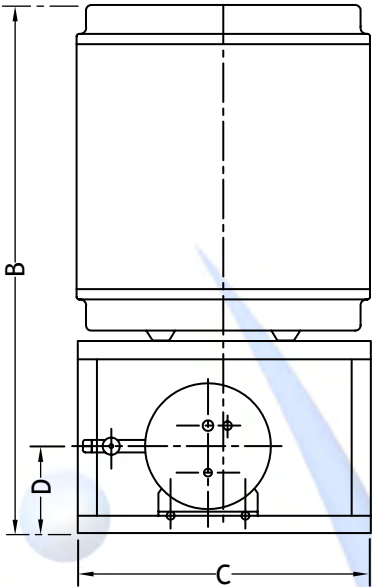
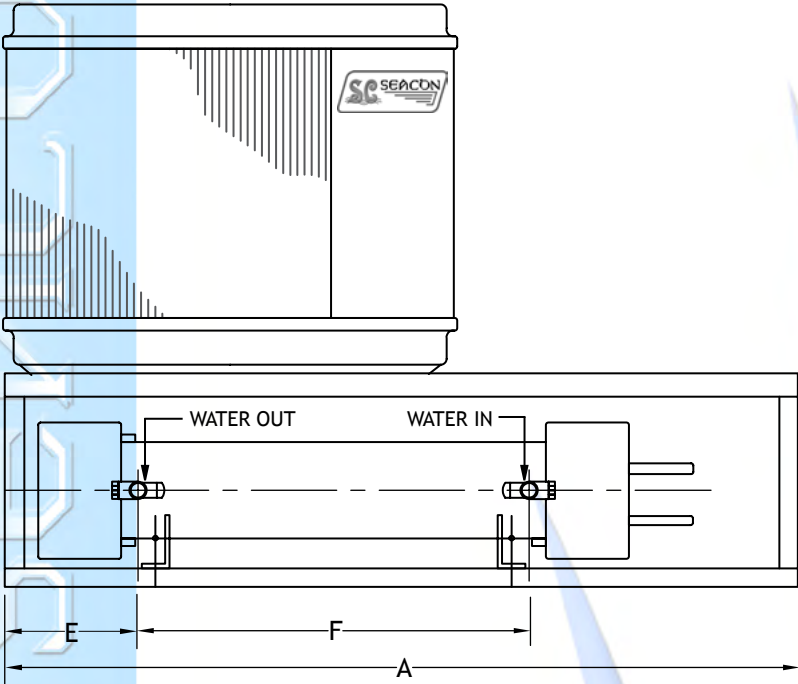
Fouling Factor 0.0005 Ft².h.F / Btu in Chiller

Temperature: 1 °C = 33.8 °F

1 °F = -17.2 °C

Air Flow: 1 CFM = 1.699011 CMH

DIMENSIONAL DRAWING



PNSA-CWB 025 TO 060

PNSA-CWB	A	B	C	D	E	F
	mm					
025	1475	940	594	171	227	764
030 - 036	1475	1019	594	184	227	764
050 - 060	1742	1168	594	184	227	1069