

PACKAGE WATER COOLED CHILLER UNIT

MODEL: PWC-CWB

CAPACITY: 45.7 to 197.1 Nominal Tons

548,000 to 2,365,200 BtuH

160.6 to 693.0 KW



Features/Benefits

Quality design and construction make the PWC-CWB (Water-Cooled) units the preferred choice. Easy installation. The PWC-CWB chiller has a compact design that fits through a standard door opening and requires minimal indoor space. The PWC-CWB chiller is delivered as a complete package for easy installation. There are no extra controls, clocks, starters, or other items to install.

The PWC-CWB unit also provides a single location electrical power entrance (using the accessory field installed control power transformer) and quick, easy piping. The PWC-CWB units are designed so that a quick start-up is assured once installation is complete, since each PWC-CWB unit is manufactured at an ISO 9002-listed manufacturing facility to guarantee quality. In addition, all PWC-CWB units are tested under load at the factory to provide reliable start-up.

PHYSICAL DATA & ELECTRICAL DATA

MODEL: PWC-CWB		050	060	070	080	100	120	140	160	180	210	240
Nominal Cooling Capacity	BTUH	548,000	605,600	697,000	788,400	1,096,000	1,211,200	1,394,000	1,576,800	1,816,800	2,091,000	2,365,200
	Tons	45.67	50.47	58.08	65.70	91.33	100.93	116.17	131.40	151.40	174.25	197.10
	KWH	160.6	177.4	204.2	231.0	321.1	354.9	408.4	462.0	532.3	612.7	693.0
No. Of Circuits		1					2					
Compressor	Type	Semi-Hermetic										
	HP.	25	30	35	40	25	30	35	40	30	35	40
	Qty./Unit	2	2	2	2	4	4	4	4	6	6	6
Water Cooled Condenser												
Water Flowrate	(GPM)	150	170	210	240	380	420	440	480	560	600	630
Entering / Leaving Water Temp.	°F	90 / 100										
	°C	32 / 38										
Water Pressure Drop	(Ft. WG)	13	16.6	16.6	6	10.5	8	6.5	6.5	6.5	8.5	6.5
No. of Water Passes		4	4	2	2	2	2	2	2	2	2	2
Water Connection In / Out	(in)	2-1/2					3-3/4					
	(mm)	63					95					
Qty./Unit		2										
Water Chiller												
No. of Circuits		2										
Chilled Water Flowrate	(GPM)	109.6	121.1	139.4	157.7	219.2	242.2	278.8	315.4	363.4	418.2	473
Chilled Water Temp. In / Out	°F	55 / 45										
	°C	13 / 7										
Chilled Water Pressure Drop	(Ft. WG)	3.66	2.72	4.64	5.69	8.59	4.83	5.83	6.89	7.75	11.13	8.69
Water Connection In / Out	(in)	3		4			5			6		
	(mm)	75		100			125			150		
Qty. / Unit		1										
Refrigerant	Type	R 22 (R407C On Request Only)										
	Charge	Holding										
Compressor (Each)	V / PH / Hz	380V / 3P / 50Hz										
	V / PH / Hz	440V / 3P / 60Hz										
	RLA. (Amp)	56	68	67.5	95	56	68	67.5	95	68	67.5	95
	LRA. (Amp.)	233	253	225	345	223	253	225	345	253	225	345
Weight	Operation (Kgs.)	1389	1470	1704	1758	2284	2658	2857	3071	3473	3783	4287

Note :

RLA = Rated Load Amp.

LRA = Locked Rotor Amp.

* Nominal Cooling Capacity Based on 3°C Suction Temp.

Liquid Suncooled -9.4 °C

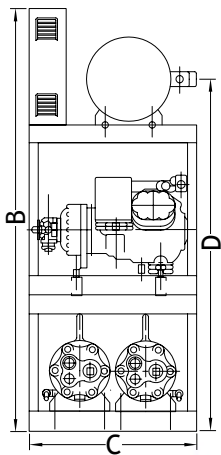
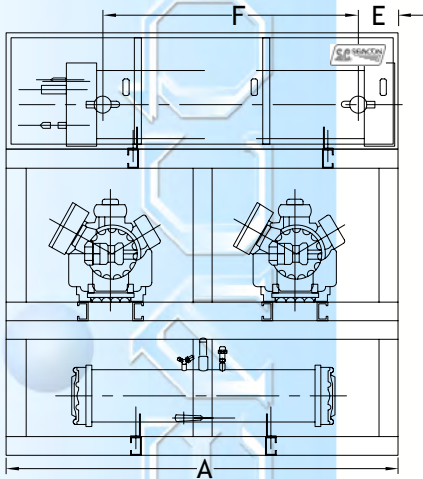
Fouling Factor 0.0005 Ft² .h.F / Btu in Chiller

Temperature: 1 °C = 33.8 °F

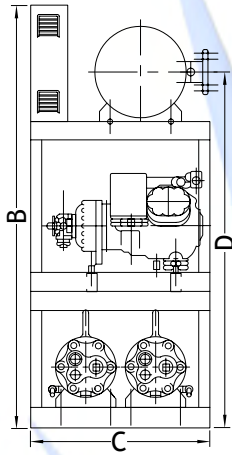
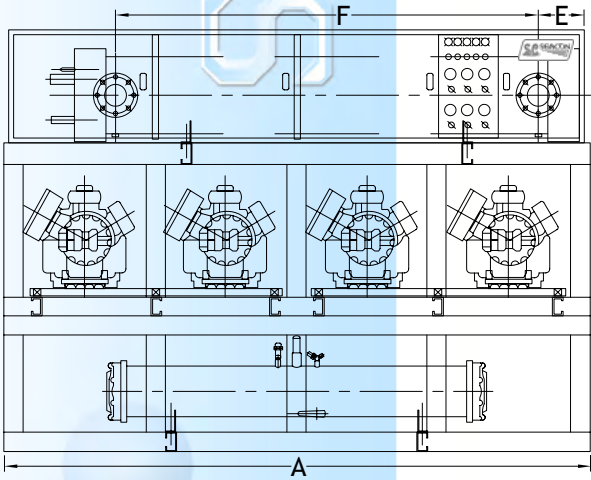
1 °F = -17.2 °C

Air Flow: 1 CFM = 1.699011 CMH

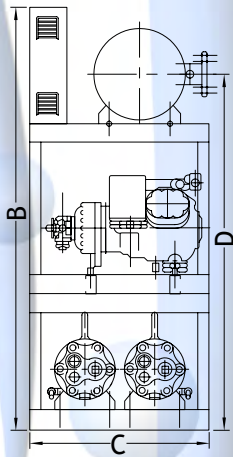
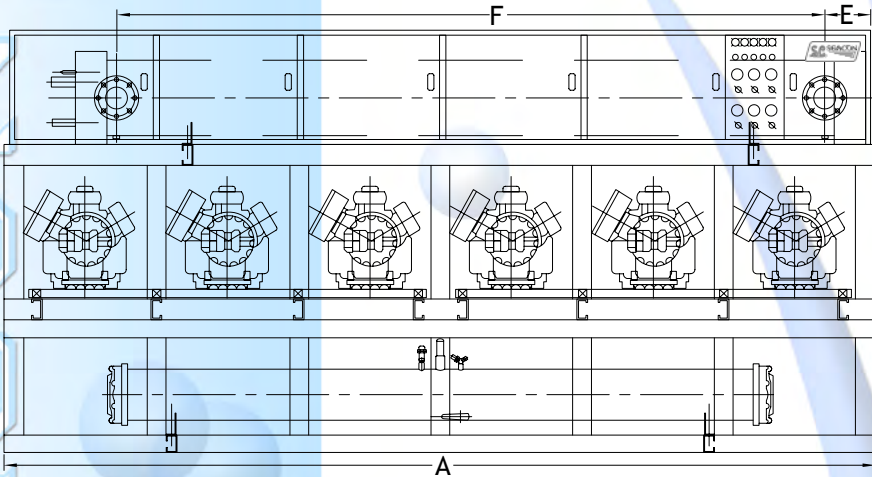
DIMENSIONAL DRAWING



DIMENSION (mm) (inch)	PWC-CWB (2 CIRCUIT)		
	050	060	070-080
A	2032 (80)	2286 (90)	2746 (108)
B	2121 (84)	2121 (84)	2121 (84)
C	890 (35)	890 (35)	890 (35)
D	1746 (69)	1746 (69)	1746 (69)
E	198 (8)	198 (8)	232 (9)
F	1334 (53)	1601 (63)	2032 (80)



DIMENSION (mm) (inch)	PWC-CWB (2 CIRCUIT)			
	100	120	140	160
A	3048 (120)	3548 (140)		
B	2221 (88)	2321 (91)		
C	940 (37)	1120 (44)		
D	1865 (73)	1990 (78)		
E	256 (10)	306 (12)		
F	2210 (87)	2718 (107)		



PWC-CWB (2 CIRCUIT)	DIMENSION (mm) (inch)					
	A	B	C	D	E	F
180	4522 (178)	2361 (93)	1200 (47)	2016 (79)	1054 (42)	2463 (97)
210	4522 (178)	2361 (93)	1100 (43)	2016 (79)	902 (36)	1718 (68)
240	4522 (178)	2361 (93)	1100 (43)	2092 (84)	927 (37)	2668 (105)