

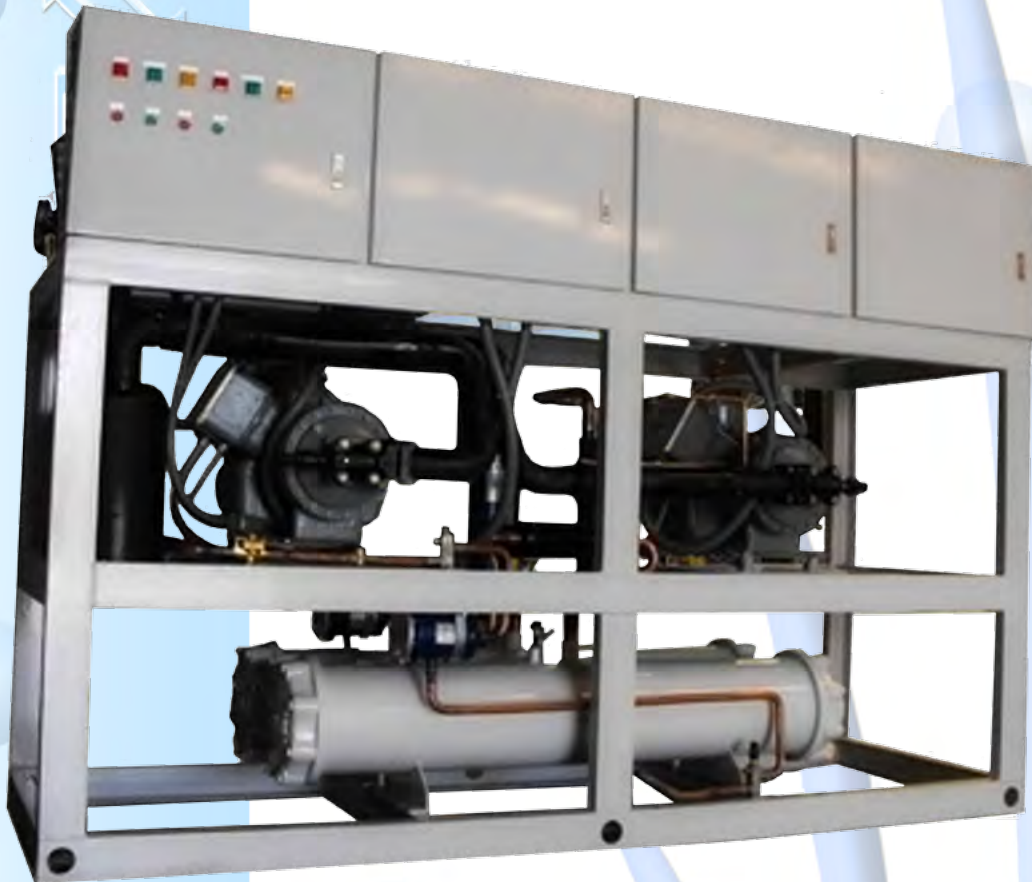
PACKAGE WATER COOLED CHILLER UNIT

MODEL: PWC-CWB-S

CAPACITY: 8.1 to 33.8 Nominal Tons

96,750 to 405,000 BtuH

28.4 to 118.7 KW



Features/Benefits

Quality design and construction make the PWC-CWB (Water-Cooled) units the preferred choice. Easy installation. The PWC-CWB chiller has a compact design that fits through a standard door opening and requires minimal indoor space. The PWC-CWB chiller is delivered as a complete package for easy installation. There are no extra controls, clocks, starters, or other items to install.

The PWC-CWB unit also provides a single location electrical power entrance (using the accessory field-installed control power transformer) and quick, easy piping. The PWC-CWB units are designed in a quick start-up is assured once installation is complete, since each PWC-CWB unit is manufactured at an ISO 9002-listed manufacturing facility to guarantee quality. In addition, all PWC-CWB units are tested under load at the factory to provide reliable start-up.

PHYSICAL DATA & ELECTRICAL DATA

MODEL: PWC-CWB-S		007	010	015	020	025	030	040	030-2	040-2	
Nominal Cooling Capacity	BTUH	96,750	116,500	156,780	202,500	274,000	302,800	394,200	313,600	405,000	
	Tons	8.06	9.71	13.07	16.88	22.83	25.23	32.85	26.13	33.75	
	KWH	28.4	34.1	45.9	59.3	80.3	88.7	115.5	91.9	118.7	
No. Of Circuits		1							2		
Compressor	Type	Semi-Hermetic									
	HP.	7.5	10	15	20	25	30	40	15	20	
	Qty./Unit	1	1	1	1	1	1	1	2	2	
Water Cooled Condenser											
Water Flowrate	(GPM)	26	30	42.5	55	75	85	120	85	110	
Entering / Leaving Water Temp.	° F	90 / 100									
	° C	32 / 38									
Water Pressure Drop	(Ft. WG)	12.5	6.5	16	15.5	13	16.6	6	16	15.5	
No. of Water Passes		4							2	4	
Water Connection In / Out	(in)	1	1-1/2			2-1/2		2 x 2-1/2	1-1/2		
	(mm)	25	38			63		2 x 63	38		
Qty./Unit		1							2		
Water Chiller											
No. of Circuits		1							2		
Chilled Water Flowrate	(GPM)	19	23	31	40	55	60	79	62	81	
Chilled Water Temp. In/Out	° F	55 / 45									
	° C	13 / 7									
Chilled Water Pressure Drop	(Ft. WG)	1.16	2.6	1.39	0.89	1.89	4.01	2.73	4.4	2.93	
Water Connection In/Out	(in)	1-1/4		1-1/2	2		2-1/2	3	2-1/2	3	
	(° C)	32		38	50		63	75	63	75	
Qty. / Unit		1									
Refrigerant	Type	R-22 (R-407C On Request Only)									
	Charge	Holding									
Compressor (Each)	V / PH / Hz	380V / 3P / 50Hz									
	V / PH / Hz	440V / 3P / 60Hz									
	RLA. (Amp)	19.8	22.1	28.6	44	56	68	95	28.6	44	
	LRA. (Amp.)	99	114	120	173	223	253	345	120	173	
Weight	Operation (Kgs.)	293	328	425	510	814	852	1013	987	1197	

Note :

RLA = Rated Load Amp.

LRA = Locked Rotor Amp.

* Nominal Cooling Capacity Based on 3°C Suction Temp.

Liquid Suncooled -9.4 °C

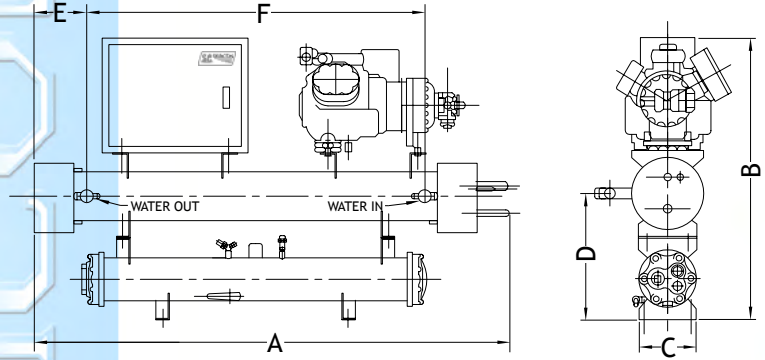
Fouling Factor 0.0005 Ft².h.F / Btu in Chiller

Temperature: 1 °C = 33.8 °F

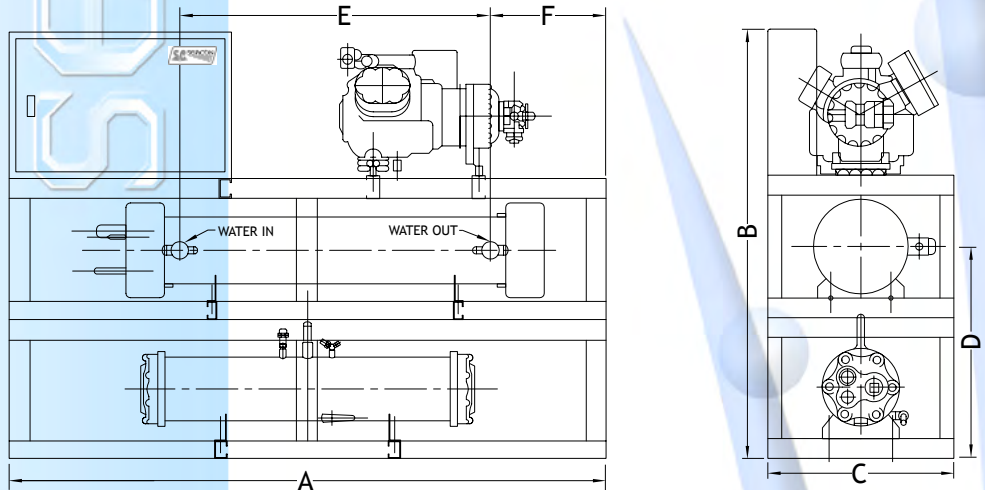
1 °F = -17.2 °C

Air Flow: 1 CFM = 1.699011 CMH

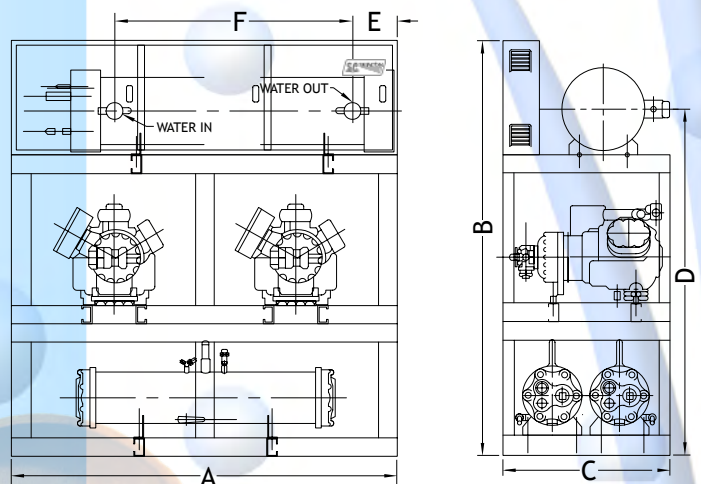
DIMENSIONAL DRAWING



PWC-CWB-S	A	B	C	D	E	F
	mm (inch)					
007	1528 (60)	1022 (40)	279 (11)	449 (18)	167 (7)	1067 (42)
010	1833 (72)	1049 (41)	279 (11)	475 (19)	167 (7)	1372 (54)



PWC-CWB-S	A	B	C	D	E	F
	mm (inch)					
015	2500 (99)	1940 (76)	762 (30)	947 (37)	200 (8)	1803 (71)
020	2000 (79)	1910 (75)	762 (30)	960 (38)	219 (9)	1346 (53)
025	2300 (91)	1910 (75)	762 (30)	960 (38)	214 (8)	1639 (65)
030	1950 (77)	1657 (65)	650 (26)	884 (35)	219 (9)	1206 (48)
040	2438 (96)	1808 (71)	762 (30)	934 (37)	200 (8)	1498 (59)



PWC-CWB-S	A	B	C	D	E	F
	mm (inch)					
030-2	2000 (79)	1920 (76)	890 (35)	1520 (60)	198 (8)	1346 (53)
040-2	2286 (90)	2021 (80)	890 (35)	1621 (64)	214 (8)	1639 (65)

SPECIFICATIONS AND DESIGN ARE SUBJECT TO CHANGE WITHOUT PRIOR NOTICE.